

NORTH YORKSHIRE COUNTY COUNCIL**TRANSPORT, ECONOMY AND ENVIRONMENT OVERVIEW AND SCRUTINY
COMMITTEE****16 APRIL 2014****ROAD CASUALTIES – NORTH YORKSHIRE****Report of the Corporate Director – Business & Environmental Services****1.0 PURPOSE OF REPORT**

- 1.1 The purpose of this report is to advise Members of the detailed road casualty statistics for 2012 in North Yorkshire. The statistics are monitored against the previous year. The report also provides a summary of road safety issues and activities in the District and provisional data for 2013.

2.0 PERSONAL INJURY ACCIDENTS AND CASUALTIES UP TO THE END OF 2012

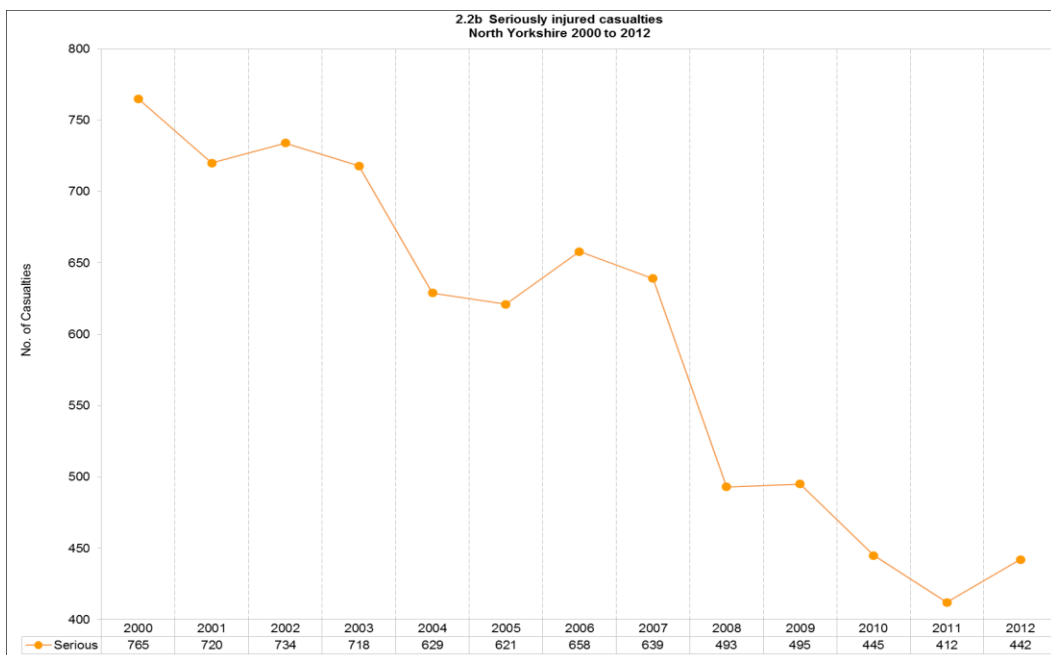
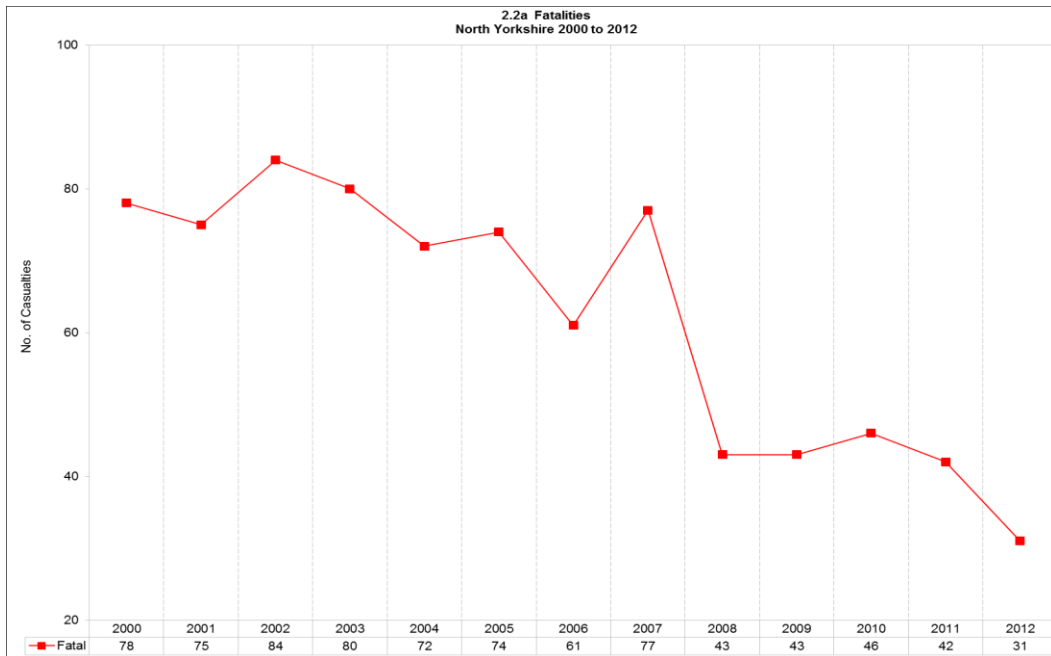
- 2.1 North Yorkshire – Overview of the county

The key findings are as follows:

- The number of people killed in road collisions reported to the police decreased from 42 in 2011 to 31 in 2012, a fall of 26%. This is the lowest figure since modern county records began in 1990.
- The number of people seriously injured increased from 412 in 2011 to 442 in 2012; a rise of 7%. Although a small increase compared to 2011, the total for 2012 is still lower than in any of the years prior to 2011.
- The total number of road collisions reported to the police rose from 1563 in 2011 to 1676 in 2012; an increase of 7%.
- The total number of casualties in road collisions reported to the police increased from 2326 in 2011 to 2366 in 2012, an increase of less than 2%.
- Total reported child casualties (ages 0-15) rose from 172 in 2011 to 189 in 2012; an increase of 10%. The number of children killed or seriously injured also rose from 21 in 2011 to 28 in 2012; an increase of 33%. These are mainly child pedestrians, most of whom step out to cross the road from the drivers nearside.
- The most significant changes in fatalities across the various road user types was seen in the number of Older Drivers (50+yrs) who died, which reduced from 12 in 2011 to 6 in 2012 and the number of motorcyclists killed, which reduced from 9 in 2011 to 5 in 2012.

Although the number of fatalities in 2012 was the lowest ever seen in North Yorkshire there were moderate increases in the numbers of people seriously injured and the number of children injured. This is only one year so it is too soon to see whether this is the beginning of an upturn in casualty numbers or simply random variations that should be expected from year to year.

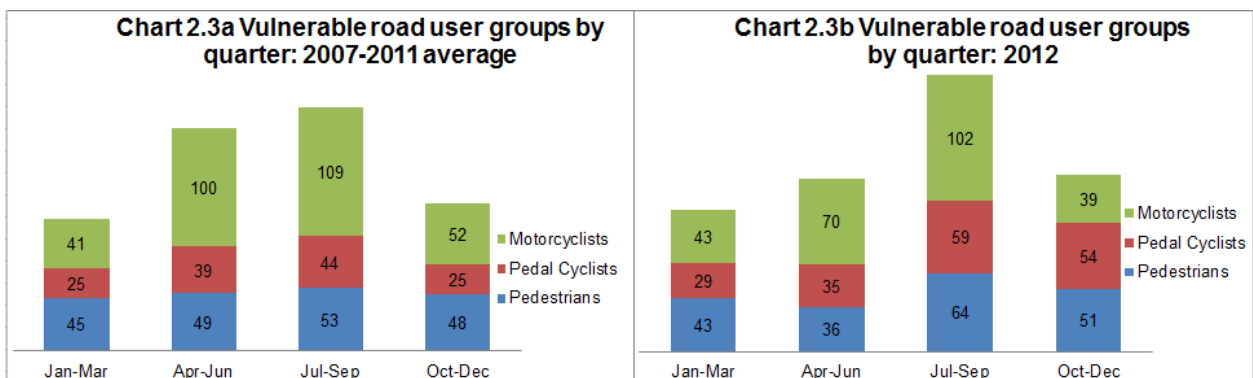
2.2 The charts below show the number of casualties by severity, 2000 – 2012





2.3 Weather patterns can have an effect on road collisions and casualties; 2012 was the second wettest year on record in the UK. In particular, there were sustained periods of heavy rainfall during late spring and early summer. Rainfall in April was 79 per cent higher than the seasonal average; in June it was double the average and 53% more than average in July.

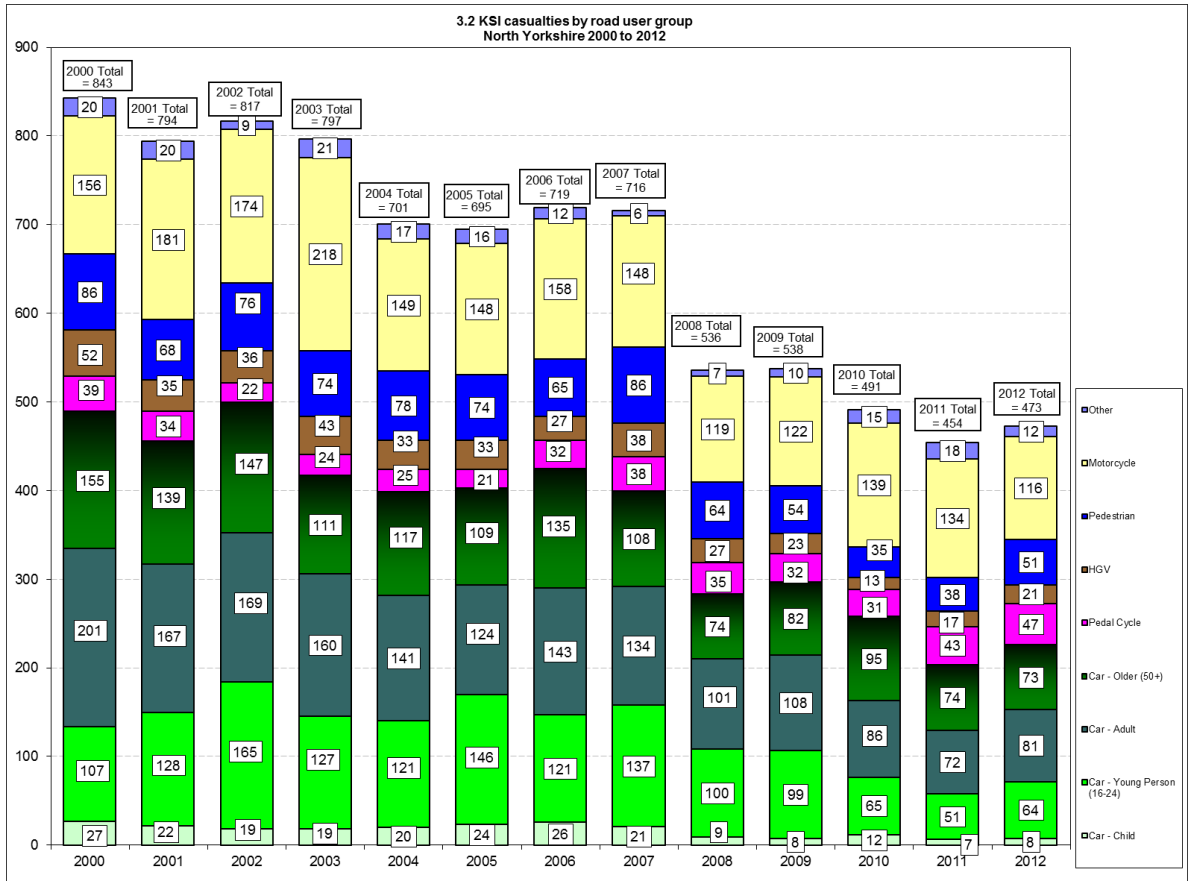
- The likely result of this additional rainfall will have been to reduce the number of journeys made by pedestrians, pedal cyclists and motorcyclists on the county's roads during the wettest months. However, this is also dependent on which days of the week were wet and which were dry: most motorcycle leisure rides take place on Wednesday afternoons and Saturdays and Sundays. If these days were dry, motorcyclists will have been on the road. Nonetheless the wetter weather may have influenced the overall number of collisions and casualties from these user groups. Other road journeys, such as those by car are likely to have been less affected by heavy rainfall and it may be that some motorcyclists and cyclists made more of their utility journeys by car instead. This would also explain the increase in serious and slight injuries due to lower speed car collisions in the wet.



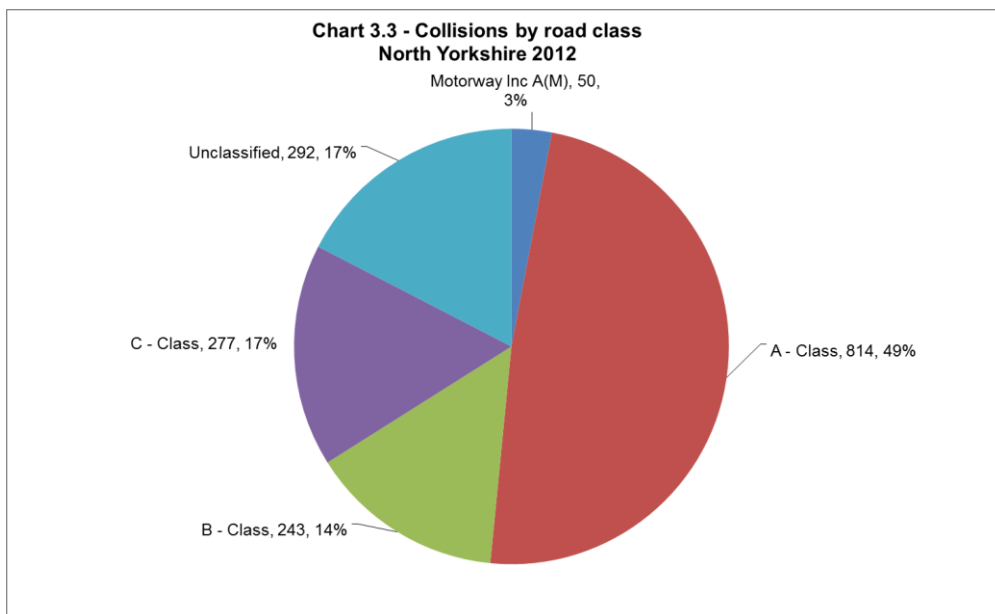
- 2.4 Chart 2.3 above shows the relationship between a) the average numbers of vulnerable road user casualties between 2007 and 2011 and b) the numbers of vulnerable road user casualties (pedestrians, pedal cyclists and motorcyclist) in each quarter of 2012,
- 2.5 Taking the average of 2007 to 2011, (Chart a) pedestrian casualties occur evenly over the quarters, whereas motorcyclists usually have a higher rate of collisions in the summer months between April and September. The pattern for 2012 appears to have been affected by the heavy rainfall in April to June.
- 2.6 Conclusions:
- It is reasonable to assume that the unusually heavy rainfall during April to June of 2012, suppressed the number of motorcyclists and related casualties on the roads, when they would usually be most active.
 - The results seen in North Yorkshire only partly reflect the national picture, in particular the quarterly increases in North Yorkshire pedal cyclist casualties between July and December 2012 are not reflected nationally. However, following efforts by 95 Alive to address under-reporting, there has been an improved level of reporting of cycle casualties, especially for crashes where only a cyclist was involved, which may be at least partly responsible for this increase.
 - With the announcement at the end of 2012 that the Tour de France 2014 will start in Yorkshire, the council is now monitoring the levels of cyclist casualties both along the proposed route and throughout the county. A regional road safety group representing the highways authorities on whose roads the race will run is working on cyclist and all road user safety matters and publicity for the route before, during and after the race. The group is working with the main agencies through the 95 Alive Partnership and local road safety groups.

3.0 North Yorkshire

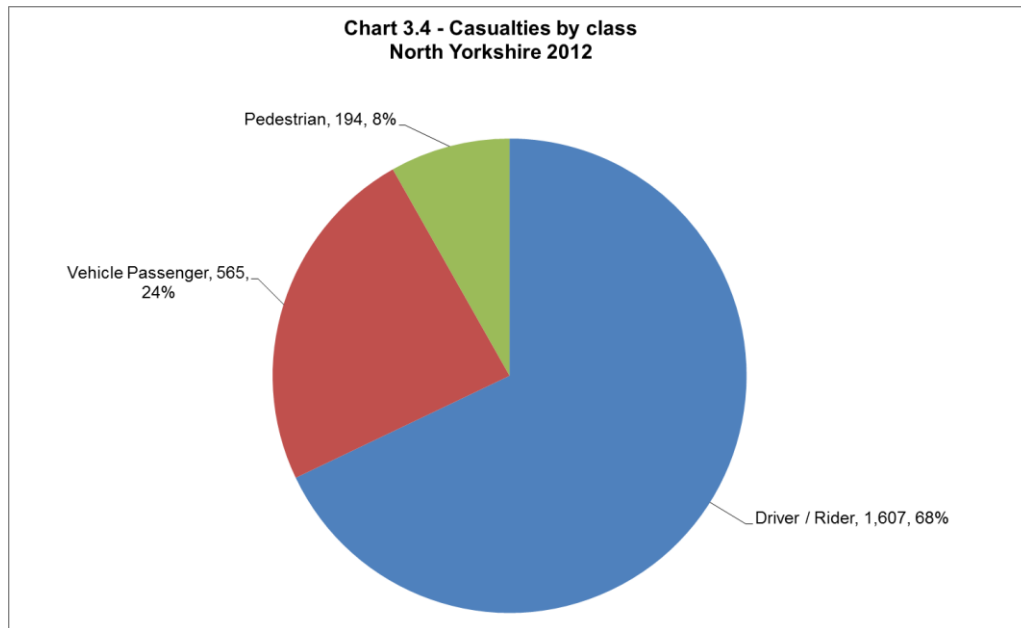
- 3.1 Chart 3.2 shows the numbers of casualties Killed and Seriously Injured (KSI) within North Yorkshire by specific road user casualty group for each calendar year from 2000 to 2012. During 2012, 54% of KSI casualties were the driver or passenger in a car and 23% were the rider or pillion passenger on a motorcycle. The total number of KSI casualties increased from 454 to 473 (4%). The number of motorcyclists that were killed or seriously injured decreased from 134 in 2011 to 116 in 2012 (-16%).



3.3 Chart 3.3 indicates the number of collisions within the district by road class during 2012. During the year 49% of collisions occurred on A class roads the same as in 2011. However, the actual number of collisions on A roads in North Yorkshire has decreased from 832 in 2011 to 814 in 2012 (-2%).



- 3.4 Chart 3.4 highlights that in 2012, 68% of all casualties within North Yorkshire were the driver or rider of a vehicle. In numerical terms there was a decrease from 1,626 driver/rider casualties in 2011 to 1,607 in 2012 (-1%). The number of vehicle passengers injured decreased from 659 in 2011 to 565 in 2012 (-14%), pedestrians injured increased from 161 in 2011 to 194 in 2012 (20%).



4.0 **COLLISION CLUSTER SITE LOCATIONS**

- 4.1 In order to improve site identification, the search criteria in urban areas (40 mph limit or less) was reduced in 2011 from 100m to 50m. This has proved a more effective way of identifying true urban collision clusters, the criteria for rural locations remains unchanged and is based on collisions within a 100m radius of each other (where the speed limit is over 40 mph). This is considered appropriate as in rural area collisions tend to be more dispersed.
- 4.2 **Rural collision cluster sites.** A rural cluster site is one at which there have been four or more personal injury collisions within a 100 metre radius of each other during a three year period (2010 – 2012) and the speed limit of the road is over 40 miles per hour.
- 4.3 **Urban collision cluster sites.** An urban cluster site is one at which there have been four or more personal injury collisions during a three year period (2010 - 2012) within a 50 metre radius of each other and the speed limit of the road is 40 miles per hour or less.
- 4.4 **Cluster sites.** There are 152 cluster sites identified in North Yorkshire for the period 2010 to 2012 compared with a total of 143 for the period 2009-2011. Details of the 152 cluster sites are contained in Appendix 1. A total of 71 sites are urban (40 mph or lower speed roads) and 81 are rural (over 40 mph limit roads). Just 5% of all collisions 2010-2012 occurred at cluster sites. A weighting index is applied based on the severity of collision i.e.

slight, serious or fatal using weightings of 1, 2 and 3 respectively, the list is then sorted by the collision severity factor, then by the casualty severity factor and lastly by total child casualty numbers in order to give every site a risk based ranking.

5.0 ROAD SAFETY ENGINEERING

5.1 This section lists the local safety schemes introduced or planned for implementation to address personal injury collisions in the North Yorkshire in the current reporting period

Craven

- A682 Cow Gate Lane, Nappa lining and signing improvements – undertaken in February 2013
- A682 Flat Lane junction, Bendgate Cottage (south of Long Preston) sign improvements – undertaken September 2012
- Broughton Road, Skipton lining and signing improvements – undertaken in June 2013
- B6479 Selside sign improvements – undertaken in February 2013.

Hambleton

- A170 Sutton Bank near Cragg House – signing improvements completed September 2012.
- A173 Guisborough Road/Newton Road Great Ayton – signing and lining improvements completed September 2013.
- A168/B1448 Northallerton Road, South Kilvington – island installation and lining improvements completed October 2013.
- B1365 Tanton Road, Tanton Bridge – signing improvements completed October 2013.
- B1257 Bilsdale – signing improvement completed November 2013.

Harrogate

- A59 approximately 400m north east of A658 Roundabout, Knaresborough – carriageway and signing improvements March 2013;
- B6265 High Moor Road, near Ripon – signing improvements completed March 2013;
- A61 Ripon Road route study – signing improvements completed July 2013;
- A59 Skipton Road/Grover Road junction, Harrogate – signing improvement and tactile paving provision;
- Bower Road/Hawra Road/Dragon Parade roundabout, Harrogate – lining improvements and tactile provision;
- Thorpe Green Lane crossroads, Thorpe Underwood – signing improvements completed May 2013;
- B6161/B6162 mini roundabout Beckwithshaw – lining and signing improvements;
- A6055 Harrogate Road/West Field Lane/Arkendale Road junction Arkendale – signing improvements to be completed later in the year;
- A658 Harrogate Road at Nab Hill, bend, North Rigton – signing improvement;
- A661 Wetherby Road, Rudfarlington, Harrogate – signing improvement;

Richmondshire

- B6271 Route Study to the east of Richmond to Brompton on Swale – signing and lining improvements undertaken in March 2013.
- A6136 Catterick Road/Brough Lane, Walkerville – Signing and lining improvements.
- B1263 East Cowton – installation of hazard marker posts completed in October 2013.

Ryedale

- A170/Kirkdale Lane/Back Lane, Junction, Welburn – signing and lining improvements undertaken in May 2013
- A169 Edenhouse Road, Malton – signing and lining improvements undertaken in April 2013.
- Strensall Road near Sherriff Hutton Bridge – signing and lining improvements.

Selby

- B1222 junction with North Sweeming Court – installation of hazard marker posts undertaken in April 2013.
- A19/A63 junction at Barlby and Osgodby - a new roundabout completed in May 2013.

Yorkshire Coast and Moors

- Queen Street/Newborough/King Street, Scarborough – junction improvements.
- A165 Valley Bridge Pde/Ramshill Rd, Jnct – Scarborough – lining, signing and traffic signal control changes.
- A165 Valley Bridge Pde/Somerset Tce/Westwood, Jnct – Scarborough – yellow box junction.

6.0 SPEED MANAGEMENT

6.1 In April 2012 the new Speed Management Protocol was implemented. This protocol has been devised and agreed by the 95 Alive Road Safety Partnership in order to provide a consistent, fair and clear response to complaints and concerns about speeding traffic within communities, whether they are urban or rural, towns or villages. Following initial trials in York and then Selby District, the programme has been adapted for use throughout the county, commencing in April 2012. A flowchart showing how the protocol works in practice is attached at Appendix 2, along with a sample of the form residents can complete to report their concern about speeding traffic. A report can be made by a single resident either directly or via their Parish or Town Council. Every report is assessed and investigated by the local district Road Safety group who will obtain up to date speed and traffic flow data to find out exactly what is happening on the road in question and then consider what, if any, action is required. The complainant is informed of the findings and outcomes.

6.2 At the time of writing the process is under review after one full year of operation in order to identify what improvements can be made and how

best to report and publicise the findings and actions taken to the wider communities.

- 6.3 Communities regularly report their concerns about speeding traffic. Experience has shown that “speeding”, as in exceeding the local speed limit is rarely a significant occurrence. This means that these local perceptions cannot be resolved by either enforcement or engineering measures. In these cases some local publicity may help and some communities have taken up the offer of a temporary Vehicle Activated Sign being installed for up to a total of three 6 week periods in a year, by contributing to the cost of installing and removing the sign. Evidence shows that using these signs for short periods, removing and later reinstalling them is more effective than the signs being in place all the time and become “part of the scenery”. This programme is currently fully subscribed and is being evaluated for effectiveness. Other ideas for local campaigns are also being developed such as “Slow Down” stickers for wheelie bins, whereby a very visible “slow down” message comes out once a week when the bins are put out to serve as an extra reminder to drivers and a reassurance to residents that efforts are being made to address their concerns.

7.0 PERSONAL INJURY COLLISION AND CASUALTIES IN 2013

- 7.1 Provisionally there have been 474 KSI casualties in North Yorkshire up to the end of December 2013 compared with a total of 473 KSI casualties for the same period in 2012. Slight casualties are lower than in 2012, with 1797 to the end of December 2013; this is 96 or 4% lower than the same period for the previous year.
- 7.2 Provisional records indicate there were 51 fatalities up to the end of December 2013 compared to 31 for the same period in 2012. The increases have mainly been among the riders of large motorcycles and are thought to be due, at least in part, to better weather conditions increasing the number of motorcyclists on the county’s roads this year. During August concerns were such that, through the 95 Alive Partnership, Road Safety Officers undertook a joint media appeal with the Police from Helmsley Market Place, to ask motorcyclists to show some restraint and be more aware of their own and other peoples safety. The appeal also asked motorists to look out for motorcyclists and cyclists and invited all road users to share the roads. The media coverage from both local and national broadcasters and newspapers and the specialist motorcycling press was excellent. This was combined with additional and high profile police enforcement operations on all the most popular routes and venues. Immediately following this media campaign, there were no motorcyclists killed or seriously injured during the following three weeks, including the busy August Bank Holiday weekend.

8.0 EQUALITIES IMPLICATIONS

8.1 Consideration has been given to the potential for any adverse equality impacts arising from the recommendation. It is the view of officers that the recommendation does not have an adverse impact on any of the protected characteristics identified in the Equalities Act 2010.

9.0 FINANCIAL IMPLICATIONS

9.1 Consideration has been given to the potential for any financial implications arising from the recommendation. It is the view of officers that the recommendation does not have a financial impact.

10.0 LEGAL IMPLICATIONS

10.1 Consideration has been given to the potential for any legal impact arising from the recommendation. It is the view of officers that the recommendation does not have a legal impact.

11.0 RECOMMENDATIONS

11.1 It is recommended that Members note the figures for collisions and casualties on the roads of North Yorkshire and the actions being taken to improve safety.

DAVID BOWE
Corporate Director – Business and Environmental Services

Author of Report: Honor Byford

Background Documents:

Road Safety – a strategic framework, DfT, May 2011
NYCC Local Transport Plan 3

High Risk Sites for North Yorkshire

Appendix 1

2013/ 14 NYCC Rank	Urban/ Rural 2013/14 NYCC Rank	Location	District	Site Type	Collision Sev. Factor	Cas Sev. Factor	Collisions			Total Collisions 2010-2012	Total Child Cas	Comments
							2010	2011	2012			
1	1	A61 Ripon Rd 600m South of Green Ln, Bend - South Stainley	Hgt	rural	16	23	3	7	0	10	0	Improvement to surfacing undertaken October 2011 - More signing works undertaken March 2013, no collisions since the 2011 works. Site will continue to be monitored.
2	1	A165 Valley Bridge Rd/ A170 Westborough, Jnct - Scarborough	Ycm	urban	12	13	3	4	3	10	2	Improvements to traffic signals and crossing facilities proposed for implementation in 2013/14.
3	2	A66/Moor Ln, Jnct - Ravensworth	Ric	rural	11	19	2	1	6	9	0	Highways Agency road, were invited to comment, no information yet received.
4	3	A61 Harrogate Rd/A658, Buttersyke Bar Rndbt - Harrogate	Hgt	rural	11	17	5	2	2	9	0	Previous site investigation. No proposed action, to be monitored
5	4	A629 Skipton Rd/Cononley Ln, Jnct - Farnhill	Cra	rural	11	15	3	3	2	8	2	Improvement to junction visibility and signage undertaken October 2011.
6	5	A65 nr Woombur Bridge - Gargrave	Cra	rural	10	16	2	5	1	8	1	2011 scheme implemented, no further action; site will continue to be monitored.
7	6	A162/B1223 Raw Lane, Jnct - Towton	Sel	rural	9	21	2	1	3	6	3	Further investigation to be undertaken.
8	7	A170 by Cragg Hs Nr Sutton Bank	Ham	rural	9	16	1	3	2	6	4	Warning sign installed in Sept 2012, 1 serious collision since works implemented; site will continue to be monitored.
9	8	A658 Harrogate Rd/Dunkeswick Ln/Hall Green Ln, Jnct - North Rigton	Hgt	rural	9	16	4	2	2	8	0	Lining and signing improvements undertaken in August 2011, drainage works also carried out in 2011. Two collisions since works but no pattern; site will continue to be monitored.
10	9	B6265/ Score Ray Lane, Xrds - Whixley	Hgt	rural	9	12	1	2	3	6	1	Signing improvement scheme implemented May 2013
11	10	A64/A162 Flyover WBC offslip, Tadcaster	Sel	rural	8	19	1	1	3	5	0	Further investigation to be undertaken.
12	11	Sccarah Bank/ Colber Ln, Xrds - Bishop Monkton	Hgt	rural	8	17	2	1	3	6	2	Signing improvement scheme implemented April/May 2013
13	12	A658 / B6163 Thistle Hill, Jnct - Harrogate	Hgt	rural	8	16	3	2	1	6	0	Previous site investigation. No proposed action to be monitored
14	13	A63 Hull Rd/A19/Highfield Vw, Jnct-Barlby	Sel	rural	8	16	1	2	4	7	0	Roundabout constructed and opened in May 2013, site will continue to be monitored.

15	14	A168/ B1448 Northallerton Rd, Jnct - South Kilvington	Ham	rural	8	15	1	5	2	8	0	Lining improvement scheme and introduction of physical island out for consultation.
16	15	A59 Skipton Rd/B6451 Brame Ln, Jnct - Kettleasing	Hgt	rural	8	14	1	3	3	7	1	Sign improvement scheme implemented in March 2012. Site will continue to be monitored.
17	16	A64/Scotchman Ln, Jnct - Flaxton	Rye	rural	8	13	2	1	2	5	3	Joint Highways Agency road, who have been invited to comment, no information yet received. and North Yorkshire County Council site, no further action proposed
18	17	A19/Ucl Rd to Ingleby Arncliffe, Jnct - Ingleby Arncliffe	Ham	rural	8	11	3	0	4	7	3	Majority of collisions only involved the A19 which is maintained by the Highways Agency road, they have been invited to comment but no information yet received.
19	18	A169 Brocka Beck, bend - Goathland	Rye	rural	8	11	0	3	1	4	1	No further action
20	2	Bower Rd/ Haywra Crescent, Rndbt - Harrogate	Hgt	urban	8	11	1	3	2	6	0	2012/13 scheme identified to improve crossing facilities and lining to be linked in with ASDA development in area however implementation delayed until 2013/14
21	19	A63 NB Rndbt W. A1(M) at Jnct 42 - Lumby	Sel	rural	8	11	4	1	1	6	0	Highways Agency road, were invited to comment, no information yet received.
22	3	A165 Columbus Ravine/Dean Rd, Rndbt - Scarborough	Ycm	urban	8	10	3	3	1	7	1	Junction redevelopment proposed as part of Tesco development, signalised area with provision for cyclists.
23	20	A59 York Rd/Kirk Hammerton Ln, Jnct - Green Hammerton	Hgt	rural	8	10	3	1	1	5	0	Signing works undertaken following a fatality in 2011. No pattern to collisions, continue to monitor site.
24	4	A684 Market Pl by the Black Swan Public House - Bedale	Ham	urban	8	8	1	4	2	7	2	Further investigation to be undertaken.
25	21	A658/Pannal Rd/Rudding Ln, Jnct - Harrogate	Hgt	rural	7	18	3	2	1	6	4	Improvement to signs implemented in March 2012. No further action, site will continue to be monitored.
26	22	A59 York Rd, 400m NE of A658 Rndbt, Bend - Knaresborough	Hgt	rural	7	16	0	4	2	6	0	Improvement to signs and road patching works completed in August 2013. Site will continue to be monitored.
27	23	A165 Hunmanby Rd/ Bridlington Rd, Jnct - Reighton	Ycm	rural	7	15	3	0	2	5	3	Initial investigations undertaken but no pattern found to collisions. Site will continue to be monitored.
28	24	A1/ Low St, Jnct - Kirkby Fleetham	Ham	rural	7	14	3	1	0	4	0	Highways Agency road, were invited to comment, no information yet received.

29	25	A1 NBC by A684 Sliproads - Leeming Bar	Ham	rural	7	12	3	1	1	5	0	Majority of collisions occurred when this was the old A1 layout, only one since adopted by NYCC, new local access road now supersedes the original layout. To be monitored.
30	26	B1222, by New Inn Bridge - Newthorpe	Sel	rural	7	12	2	2	1	5	0	Improvements to signs implemented in early 2012, site will continue to be monitored.
31	27	A165 Moor Rd/Primrose Valley Rd, Jnct - Filey	Ycm	rural	7	12	2	2	1	5	0	Collision prevention scheme undertaken in 2010. Initial investigations undertaken but no pattern found to collisions. Site will continue to be monitored.
32	28	A1, 500m South of Allerton Grange Interchange - Allerton Grange	Hgt	rural	7	10	2	2	0	4	0	Highways Agency road, were invited to comment, no information yet received.
33	29	B1222, Low Grange, Jnct by Becks Farm - Newthorpe	Sel	rural	7	10	1	2	1	4	0	Improvements to signs implemented in early 2012, site will continue to be monitored.
34	30	B1222/Hall Ln, Jnct - Newthorpe	Sel	rural	7	10	3	0	1	4	0	Improvements to signs implemented in early 2012, site will continue to be monitored.
35	5	A59 Knaresborough Rd/Willaston Rd, Jnct - Harrogate	Hgt	urban	7	9	0	3	3	6	1	Investigation found no clear collision pattern; site will continue to be monitored.
36	31	B6271 at Broken Brae, bend - Brompton-on-Swale	Ric	rural	7	9	0	2	4	6	0	2012/13 B6271 route study recommended lining and hazard marker post work, surface dressing to be undertaken in 2013/14 with additional lining works to be carried out at same time. This location is to be surfaced dressed this financial year
37	32	A169 Saltergate Bank by Horcum Woods Nr Hole of Horcum	Rye	rural	7	9	3	0	1	4	0	Further investigation to be undertaken during 2013/14
38	33	A59 Interchange/A1 Jnct 47, Western Entrance to Rndbt - Allerton Grange	Hgt	rural	7	8	2	3	2	7	0	On previous years site list, no action as Flaxby Moor roundabout proposed for implementation in 2013.
39	6	B1257 Newbiggin/ Finkle St, Jnct - Malton	Rye	urban	7	7	2	2	2	6	1	No recommendations from 2013/14 investigation - proposed improvements as part of development involve provision for pedestrians across B1257
40	7	Newborough/Queen St/King St, Jnct - Scarborough	Ycm	urban	7	7	2	1	2	5	0	Scheme to improve pedestrian facilities by means of footway build out and relocation of dropped crossing to be implemented this year, 2013/14
41	34	A65/ Holm Ln, Jnct/bend - Austwick	Cra	rural	7	7	1	2	3	5	0	Further investigation to be undertaken.
42	8	B6162 Pot Bank/B6161 Otley Rd, Jnct - Beckwithshaw	Hgt	urban	6	14	1	3	1	5	2	Improvements to mini roundabout markings and signs to be implemented this financial year.
43	35	A59/Station Rd, Jnct - Whixley	Hgt	rural	6	14	1	1	2	4	0	Sign improvement scheme implemented in March 2012, site will continue to be monitored.

44	36	A64 by Barton Hill & Spital Bridge, Jnct - Barton-Le-Willows	Rye	rural	6	13	1	2	1	4	4	Highways Agency road, were invited to comment, no information yet received.
45	37	A171 Guisborough Rd/B1460 Stakesby Rd, Jnct - Cross Butts	Ycm	rural	6	12	2	2	1	5	1	Roundabout to be constructed in 2013/14 as part of Whitby Park and Ride scheme.
46	38	A169/A64, Rndbt North End - Malton	Rye	rural	6	11	1	3	1	5	4	Joint Highways Agency road, who have been invited to comment, no information yet received. and North Yorkshire County Council site, no further action proposed
47	39	A59 Skipton Rd/ Hardisty Hill, Jnct - Blubberhouses	Hgt	rural	6	11	0	1	3	4	0	Major resurfacing works completed in 2011. Investigation undertaken found no collision pattern. Site will continue to be monitored.
48	9	A171 Helredale/Caedmon School, Jnct - Whitby	Ycm	urban	6	10	2	2	1	5	1	Improvements to road markings and signage undertaken in 2011/12. Site will continue to be monitored.
49	40	A59 York Rd/Shortsill Ln, Jnct, Flaxby	Hgt	rural	6	10	4	0	0	4	0	Collisions occurred in 2010 and Flaxby Moor golf development improvements proposed start date 2013. To be monitored.
50	10	Scotton Rd/Seagrave Rd, Area - Catterick Garrison	Ric	urban	6	9	0	1	3	4	1	No collision pattern, site will continue to be monitored.
51	41	A65/A6131 The Bailey, Jnct - Skipton	Cra	rural	6	9	3	1	1	5	1	No recommendations from 2 previous investigations - 1 collision occurred since. Site to be monitored
52	42	A171 Pond Hill - Fylingthorpe	Ycm	rural	6	9	1	2	1	4	1	Further investigation to be undertaken. Road to be surface dressed during 2013/14
53	11	A167 South Prd/A168 Thirsk Rd/High St/A167 East Rd, Rndbt - Northallerton	Ham	urban	6	9	1	2	2	5	0	Signing, lining and pedestrian improvements undertaken in November 2011. Site will continue to be monitored.
54	43	B1365/Tanton Rd/Yarm Ln, Jnct - Tanton	Ham	rural	6	9	1	1	2	4	0	Signing scheme to be implemented in 2013/14 currently under consideration by Traffic Engineering Team
55	44	B6265/ High Moor Rd, Jnct - Skelton-on-Ure	Hgt	rural	6	9	2	2	0	4	0	Pothole and lining works undertaken as part of maintenance works, hazard marker posts and relocation of advanced direction sign implemented Feb 2013
56	45	A1 NBC at Skeeby Filling Station	Ric	rural	6	8	3	0	1	4	2	Highways Agency road, were invited to comment, no information yet received.
57	46	A65/ B6480 Buckhaw Brow, Jnct - Settle	Cra	rural	6	8	1	2	1	4	2	No collision pattern. Site will continue to be monitored.
58	12	Royal Albert Drive, Area - Scarborough	Ycm	urban	6	8	1	0	3	4	1	Site currently subject to increased turning traffic due to southbound restrictions associated with the Yorkshire Water scheme on Marine Drive. Further investigation to be undertaken.

59	47	B6265/ Moor Ln, bend - Threshfield	Cra	rural	6	8	3	0	1	4	1	Further investigation to be undertaken.
60	13	B1261 Cayton Low Rd/Moor Ln, Jnct - Cayton	Ycm	urban	6	8	2	1	2	5	0	Signalised junction to be assessed and added to the Integrated Transport Capital Reserve List. Signing and lining scheme implemented in February 2012, site will continue to be monitored.
61	14	A661 Wetherby Rd/Rudding Ln/Forest Ln, Jnct - Harrogate	Hgt	urban	6	8	1	1	3	5	0	Further investigation to be undertaken.
62	15	A59 Knaresborough Rd/ Layland Rd, Jnct - Harrogate	Hgt	urban	6	8	2	2	1	5	0	Investigation found no clear collision pattern; site will continue to be monitored.
63	48	A6055 Harrogate Rd/West Field Ln/Arkendale Rd, Jnct - Arkendale	Hgt	rural	6	8	0	1	3	4	0	Further investigation to be undertaken.
64	16	B1261 Scarborough Rd/Stoney Hags Rd, Jnct - Seamer	Ycm	urban	6	7	0	3	2	5	2	Mini roundabout installed in 2012 at former cross roads. Speed limit between Seamer and Crossgates to be reduced to 40mph during 2013/14
65	17	A629/B6172 Station Rd, Rndbt - Kildwick	Cra	urban	6	7	1	4	1	6	0	Lining and surfacing improvements undertaken in November 2011.
66	18	Royal Parade/Valley Drive, Jnct - Harrogate	Hgt	urban	6	7	0	2	2	4	0	Investigation found no clear collision pattern; site will continue to be monitored.
67	19	A165 Valley Bridge Prd/Ramshill Rd, Jnct - Scarborough	Ycm	urban	6	7	2	3	1	6	0	Further investigation to be undertaken, traffic signal control changes to be implemented 2013/14
68	49	A66/Sedbury Home Farm, Jnct - Gilling West	Ric	rural	6	7	0	3	1	4	0	Highways Agency road, were invited to comment, no information yet received.
69	50	A66/A1, West Jnct - Scotch Corner	Ric	rural	6	7	0	1	3	4	0	Highways Agency road, were invited to comment, no information yet received.
70	20	Church St/Norton Rd/Welham Rd, Jnct - Norton	Rye	urban	6	6	1	2	3	6	2	Further investigation to be undertaken during 2013/14
71	21	A6108 Frenchgate/B6271 Maison Dieu, Richmond	Ric	urban	6	6	2	2	0	4	2	No recommendations, site will continue to be monitored. This area was investigated last year with no Improvements identified
72	22	A61 West Gate/B1448 Topcliffe Rd, Area - Thirsk	Ham	urban	6	6	0	1	3	4	1	Further investigation to be undertaken.
73	23	B1364 Castle Rd/ U743 Aberdeen Rd, Area - Scarborough	Ycm	urban	6	6	1	2	1	4	1	Junction to be slightly improved through the Tesco development.
74	24	A59 Harrogate Rd/Waterside, Jnct - Harrogate	Hgt	urban	6	6	2	1	1	4	0	Investigation found no clear collision pattern; site will continue to be monitored.
75	51	A61 Ripon By-Pass/ B6265 Boroughbridge Rd, Rndt - Ripon	Hgt	rural	6	4	2	1	1	4	0	Investigation found no clear collision pattern; site will continue to be monitored.
76	25	A65 Coniston Bridge - Coniston Cold	Cra	urban	5	12	1	0	4	5	2	Further investigation to be undertaken.
77	26	A165 Valley Bridge Prd/Somerset Tce/Westwood, Jnct - Scarborough	Ycm	urban	5	11	3	1	1	5	0	Signal timings altered in 2012/13. Yellow box markings to be added to the junction, 2013/14

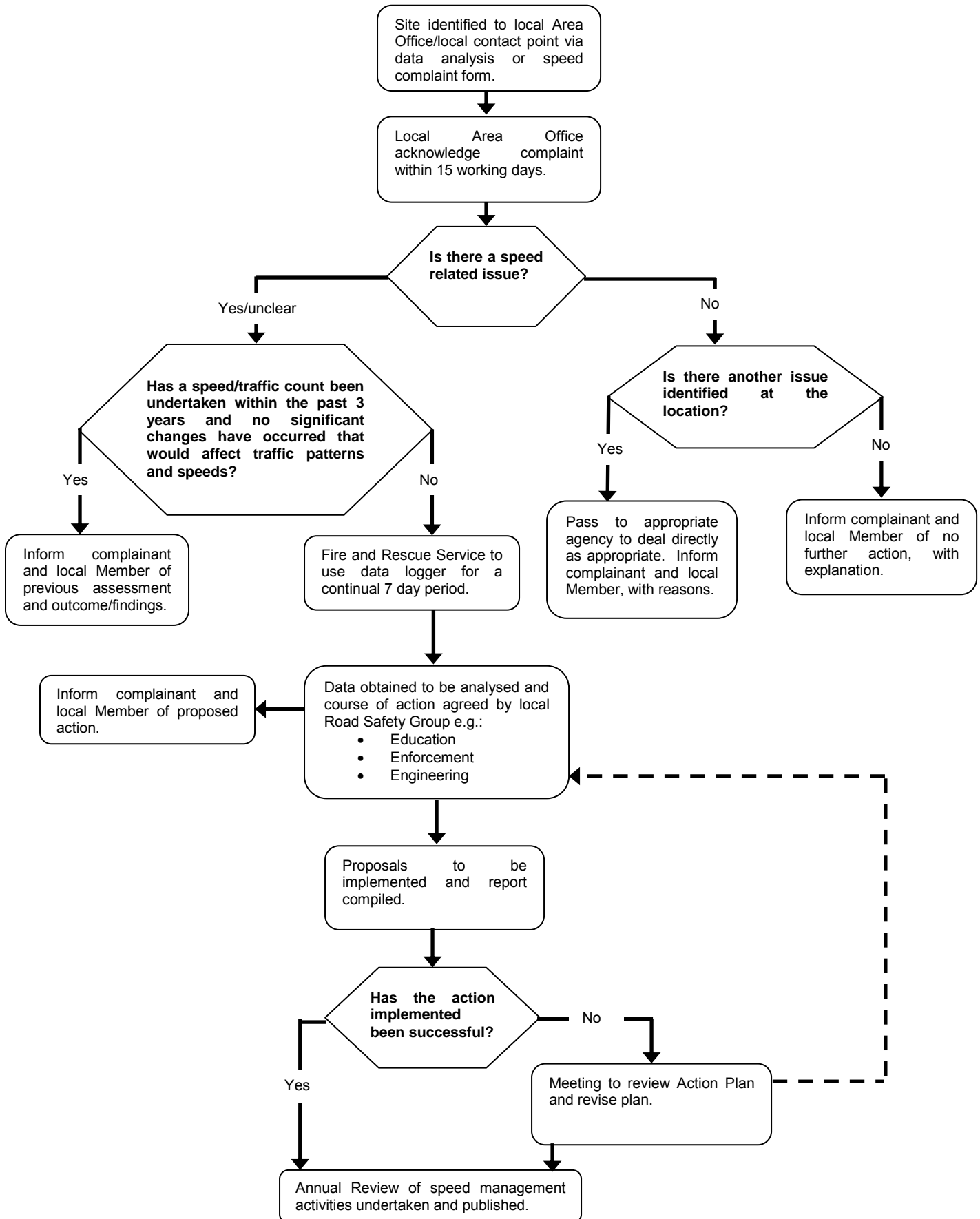
78	27	C306 Toulston Lane/Rudgate, jnct, Tadcaster	Sel	urban	5	11	0	2	3	5	0	Further investigation to be undertaken.
79	28	A59 Forest Lane Head/Bogs Ln/Forest Ln, Jnct - Starbeck	Hgt	urban	5	11	3	1	0	4	0	Further investigation to be undertaken.
80	29	B6162 Otley Rd/Cold Bath Rd/Arthurs Av, Jnct - Harrogate	Hgt	urban	5	10	0	2	2	4	0	Further investigation to be undertaken.
81	52	A59 Skipton Rd/Rowden Ln/ Burley Bank Rd, Jnct - Harrogate	Hgt	rural	5	10	0	3	1	4	0	Investigation found no clear collision pattern; site will continue to be monitored.
82	30	A19 Brook St/Armoury Rd/Union Ln, Jnct - Selby	Sel	urban	5	9	4	1	0	5	2	Junction to be modified as part of Tesco development.
83	53	A59 New Rd, laybys - Hopperton	Hgt	rural	5	9	0	3	2	5	1	Further investigation to be undertaken.
84	31	A661 Wetherby Rd/Railway Rd, Jnct - Harrogate	Hgt	urban	5	9	2	1	2	5	0	Improvements to signals were carried out in 2012/13, site will continue to be monitored.
85	32	A165 Filey Rd/ Princess Royal Park, Jnct - Scarborough	Ycm	urban	5	9	1	2	1	4	0	Initial investigations undertaken but no pattern found to collisions. Site will continue to be monitored.
86	54	A59/A168 Jnct - Allerton Grange	Hgt	rural	5	9	1	3	1	5	0	Minor improvements proposed as part of development in area
87	55	A1 1K NW of A6136 - Catterick	Ric	rural	5	8	2	0	2	4	1	Highways Agency road, were invited to comment, no information yet received.
88	56	Scalm Ln 500m SE of Broad Ln, Bend - Wistow	Sel	rural	5	8	0	2	2	4	0	Further investigation to be undertaken.
89	33	A1041 Park St/A19 Gowthorpe - Jnct/Area - Selby	Sel	urban	5	7	1	2	2	5	1	No collision pattern site will continue to be monitored.
90	34	A165 Filey Rd/Mountside/Belvedere, Xrds - Scarborough	Ycm	urban	5	7	2	2	0	4	1	Further investigation to be undertaken.
91	35	A6136 Richmond Rd /Shute Rd /Gough Rd, Jnct - Catterick Garrison	Ric	urban	5	7	2	2	1	5	0	Lining improvements carried out in summer 2012, site will continue to be monitored.
92	36	A6131 Keighley Rd Bus Station Area, Skipton	Cra	urban	5	7	2	1	2	5	0	No collision pattern. Site will continue to be monitored.
93	37	A61 Leeds Rd/Leadhall Ln/Hookstone Rd, Jnct - Harrogate	Hgt	urban	5	7	0	2	2	4	0	Investigation found no clear collision pattern; site will continue to be monitored.
94	57	A19/Moor Rd, Jnct - Knayton	Ham	rural	5	7	2	0	3	5	0	Highways Agency road, were invited to comment, no information yet received.
95	58	A6136 Longwood Bank, by Rd to Sewage Works - Richmond	Ric	rural	5	7	3	0	1	4	0	A signing and lining scheme implemented in 2012, only one collision occurred since - site will continue to be monitored. Improvements were completed at this location 2 years ago.
96	59	A59/A6069 Broughton Rd, Jnct - Skipton	Cra	rural	5	7	1	2	1	4	0	2012/13 investigation implemented recommendations.
97	60	A682/ Cow Gate Ln, Jnct/Bend - Nappa	Cra	rural	5	7	2	1	1	4	0	2012/13 chevron and lining treatment scheme implemented on bends from investigation.

98	61	Strensall Rd nr Sheriff Hutton Bridge, Jnct - West Lilling	Rye	rural	5	7	1	1	2	4	0	Signing and lining improvements to be undertaken during 2013/14
99	62	A658/Haggs Rd, Jnct - Follifoot	Hgt	rural	5	7	0	3	1	4	0	Signing schemes implemented in April 2011, reduction in collisions since implementation. Site will continue to be monitored.
100	38	A59 High St/Silver St, Area - Knaresborough	Hgt	urban	5	6	4	1	0	5	2	Further investigation to be undertaken.
101	39	A165 Northway/Trafalgar St West, Jnct - Scarborough	Ycm	urban	5	6	4	0	1	5	1	Initial investigations undertaken but no pattern found to collisions. Site will continue to be monitored.
102	40	A64 Falsgrave Rd/Belgrave Cres/Londesborough Rd, Jnct - Scarborough	Ycm	urban	5	6	4	0	0	4	0	Junction resurfaced with amended road markings, 2011/12. No collisions since works, site will continue to be monitored.
103	41	A661 Wetherby Rd/Hookstone Chase, Jnct - Harrogate	Hgt	urban	5	6	1	1	3	5	0	Further investigation to be undertaken.
104	42	Bridge St/Sandgate/Grape Ln, Jnct - Whitby	Ycm	urban	5	6	2	0	2	4	0	Initial investigations undertaken but no pattern found to collisions. Site will continue to be monitored.
105	43	B1222 Kirkgate/Finkle Hil Jnct to Low St, Jnct - Area - Sherburn in Elmet	Sel	urban	5	6	4	1	0	5	0	No collision pattern site will continue to be monitored.
106	44	A61 West Park/Beech Gr, Jnct - Harrogate	Hgt	urban	5	6	1	1	2	4	0	Further investigation to be undertaken.
107	63	A163 Market Weighton Rd/A19, Jnct - Barlby	Sel	rural	5	6	1	1	2	4	0	No collision pattern, site will continue to be monitored.
108	64	A658 Harrogate Rd at Nab Hill, bend - North Rigton	Hgt	rural	5	6	1	2	1	4	0	Further investigation to be undertaken.
109	45	A167 South Prd/Racecourse Ln/A167 Boroughbridge Rd, Rndbt - Northallerton	Ham	urban	5	5	1	1	3	5	1	Lining improvement scheme implemented in 2011, site will continue to be monitored.
110	46	B1365 High St/ Bridge Rd, Jnct - Stokesley	Ham	urban	5	5	2	1	1	4	1	No collision pattern; site will continue to be monitored.
111	47	A684 Friarage St/ East Rd, Rndbt - Northallerton	Ham	urban	5	5	1	3	0	4	1	No collision pattern; site will continue to be monitored.
112	48	A61 Market Pl/B1448 Kirkgate, Jnct - Thirsk	Ham	urban	5	5	1	2	1	4	0	Further investigation to be undertaken.
113	49	Ramshill Rd/Cambridge Terr, Area - Scarborough	Ycm	urban	5	5	1	2	1	4	0	Further investigation to be undertaken.
114	50	A64 Falsgrave Rd/Seamer Rd, Jnct - Scarborough	Ycm	urban	5	5	1	2	2	5	0	Further investigation to be undertaken.
115	51	A170 Falsgrave Rd/A171 Scalby Rd, Jnct - Scarborough	Ycm	urban	5	5	1	0	3	4	0	Further investigation to be undertaken.
116	65	A63/A1238 Leeds Rd, Rnbt - Thorpe Willoughby	Sel	rural	5	5	2	2	0	4	0	No collision pattern, site will continue to be monitored.
117	66	A64/Bramham Rndbt East by A1 - Tadcaster	Sel	rural	5	5	0	3	1	4	0	Highways Agency road, were invited to comment, no information yet received.

118	67	A6136 Catterick Rd/Brough Ln, Jnct - Walkerville	Ric	rural	4	11	2	1	1	4	1	2012/13 rumble strip and lining scheme implemented
119	68	A19/ York Rd, Rndbt - Easingwold	Ham	rural	4	11	0	2	2	4	1	Further investigation to be undertaken.
120	69	A19 Off Slip from A19 SBC to A19 SBC single cway - Thirsk	Ham	rural	4	8	0	2	2	4	3	Collisions are spread out across the site on both HA and NYCC maintained roads. To be monitored.
121	52	A59 Skipton Rd/ Knox Av, Jnct - Harrogate	Hgt	urban	4	8	2	1	1	4	0	Investigation found no clear collision pattern; site will continue to be monitored.
122	53	Harrogate Rd/Morrisons, Area - Ripon	Hgt	urban	4	7	2	1	1	4	0	Further investigation to be undertaken.
123	54	Cheltenham Mt/Commercial St/Station Prd, Jnct - Harrogate	Hgt	urban	4	7	3	0	1	4	0	Further investigation to be undertaken.
124	70	A1041 Bawtry Rd/C322 Brayton Ln, Jnct - Brayton	Sel	rural	4	7	2	0	2	4	0	Further investigation to be undertaken.
125	71	A1, 750m South of A6055 Flyover - Minskip	Hgt	rural	4	6	1	2	1	4	2	Highways Agency road, were invited to comment, no information yet received.
126	55	B1261 Scarborough Rd/B1261 Station Rd, Rndbt - Seamer	Ycm	urban	4	6	2	1	1	4	1	Further investigation to be undertaken.
127	56	A169 Coach Rd/B1460 The Carrs, Jnct - Briggswath	Ycm	urban	4	6	2	1	1	4	0	Further investigation to be undertaken.
128	57	A6069 Swadford St/Keighley Rd, Jnct - Skipton	Cra	urban	4	6	0	3	1	4	0	Further investigation to be undertaken.
129	72	A1(M) Nr Sand Pit - Boroughbridge	Hgt	rural	4	6	2	2	0	4	0	Highways Agency road, were invited to comment, no information yet received.
130	73	A658/A661 Wetherby Rd, Rndbt - Harrogate	Hgt	rural	4	6	1	2	1	4	0	Investigation found no clear collision pattern; site will continue to be monitored.
131	74	A661 Wetherby Rd by Ucl to Rudfarlington - Harrogate	Hgt	rural	4	6	1	0	3	4	0	Further investigation to be undertaken.
132	75	A659/Garnet Ln, Xrds - Tadcaster	Sel	rural	4	6	2	0	2	4	0	Further investigation to be undertaken.
133	58	A6068 Main St/Ashville Terrace, Area - Cross Hills	Cra	urban	4	5	1	1	2	4	3	No collision pattern. Site will continue to be monitored.
134	59	A66 Wetherby Rd/St Winifred's Av/Willaston Cres, Jnct - Harrogate	Hgt	urban	4	5	0	1	3	4	1	Investigation found no clear collision pattern; site will continue to be monitored.
135	76	A61 Harrogate Rd/Burn Bridge Ln, Jnct - Harrogate	Hgt	rural	4	5	1	2	1	4	1	Further investigation to be undertaken.
136	60	A6131 High St - Skipton	Cra	urban	4	5	2	1	1	4	0	No collision pattern. Site will continue to be monitored.
137	61	A59 Skipton Rd/Grove Rd, Jnct - Harrogate	Hgt	urban	4	5	1	2	1	4	0	2012/13 recommendations for sign improvements and tactile paving provision to be introduced 2013/14
138	62	A59 Skipton Rd/Dragon Parade, Jnct - Harrogate	Hgt	urban	4	5	0	1	3	4	0	Further investigation to be undertaken.
139	77	A168 South Slip/A1, Jnct - Dishforth	Hgt	rural	4	5	0	0	4	4	0	Highways Agency road, were invited to comment, no information yet received.

140	63	A59 Skipton Rd/Claro Rd, Jnct - Harrogate	Hgt	urban	4	4	0	3	1	4	1	Further investigation to be undertaken.
141	64	High Street/Friarage St/A684 Brompton Rd, Rndbt - Northallerton	Ham	urban	4	4	1	1	2	4	0	Further investigation to be undertaken.
142	65	A61 Parliament St, Crescent Rd, Xrds - Harrogate	Hgt	urban	4	4	2	1	1	4	0	Investigation found no clear collision pattern; site will continue to be monitored.
143	66	A61 Ripon Rd/Unc Rd by Womard Green, Jnct - Markington	Hgt	urban	4	4	1	1	2	4	0	Sign improvement scheme implemented in March 2013. Site will continue to be monitored.
144	67	C237 Manor Rd/Woodland Ravine, Jnct - Scarborough	Ycm	urban	4	4	1	0	3	4	0	Initial investigations undertaken but no pattern found to collisions. Site will continue to be monitored.
145	68	A59 Skipton Rd/A661 Wetherby Rd/Knaresborough Rd, Rndbt - Harrogate	Hgt	urban	4	4	1	2	1	4	0	Further investigation to be undertaken.
146	69	A61 Station Prd/Raglan St, Jnct - Harrogate	Hgt	urban	4	4	2	0	3	5	0	Further investigation to be undertaken.
147	70	A61 Harrogate Rd/ Station Ln, Bend - Wormald Green	Hgt	urban	4	4	0	0	1	1	0	Sign improvement scheme implemented in March 2013. Site will continue to be monitored.
148	71	A61 The Carr Leeds Rd/Pannal Bank/Follifoot Rd, Jnct - Harrogate	Hgt	urban	4	4	1	2	1	4	0	Further investigation to be undertaken.
149	78	A1041 Bawtry Rd/Barlow Road, Jnct - Barlow	Sel	rural	4	4	1	2	1	4	0	Signing scheme implemented in 2011/12, site will continue to be monitored.
150	79	B6479, 175M N. of drive to Gilgarth Hill Farm, Bend - Selside	Cra	rural	4	4	1	3	0	4	0	Signing improvement undertaken in March 2013.
151	80	A629/A6131 Snaygill Rndbt - Low Bradley	Cra	rural	4	4	0	1	3	4	0	Further investigation to be undertaken.
152	81	A61 Ripon Rd/Green Ln, Jnct - South Stainley	Hgt	rural	4	4	0	1	3	4	0	2012/13 signing scheme implemented, works delayed and to be undertaken in 2013/14

Speed Complaint Flowchart





Name		Organisation	(If applicable)
Address			
Telephone		Email	
Date of Referral			
Type of concern (e.g. speeding cars, motorcycles, wagons, etc.).			
Location of problem: (please be very specific - grid ref, road, near junction, landmark, house, etc so that we know where to place our equipment).			
<i>Include current speed limit of road(s)</i>			
Days/times of concern (is the issue at certain times of the day, days of the week, school term or holidays, etc?).			
How have you become aware of this? (e.g. have you seen it yourself or reported at Parish meeting?).			
Motorists noticed speeding (is a certain group speeding such as locals, a particular type of vehicle or employees of certain company?)			
Additional Information:			

The information given on this form will be shared with partner agencies



Return this form by email or post to your local Highways Office – see below

Area	Postal address	e-mail address
1 - Richmondshire	NYCC Highways & Transportation Area 1 - Richmond Office Gatherley Road Industrial Estate Brompton On Swale Richmond North Yorkshire DL10 7JQ	Area1.richmond@northyorks.gov.uk
2 - Hambleton	NYCC Highways & Transportation Area 2 Thirsk Office Thirsk Industrial Park York Road Thirsk North Yorkshire YO7 3BX	Area2.thirsk@northyorks.gov.uk
3 –Whitby, Coast and Moors & Scarborough Borough	NYCC Highways & Transportation Area 3 - Whitby Office Whitby Highways Depot Cholmley Way Whitby YO22 4NQ	Area3.whitby@northyorks.gov.uk
4 - Ryedale	NYCC Highways & Transportation Area 4 Pickering Office Beansheaf Industrial Park Tofts Rd Kirby Misperton, Malton YO17 6BG	Area4.kirbymisperton@northyorks.gov.uk
5 – Craven and Skipton	NYCC Highways & Transportation Area 5 Skipton Snaygill Industrial Estate Keighley Road Skipton BD23 2QR	Area5.skipton@northyorks.gov.uk
6 – Harrogate District and Borough	NYCC Highways & Transportation Area 6 Office Stump Cross Boroughbridge YO51 9HU	Area6.boroughbridge@northyorks.gov.uk
7 - Selby	NYCC Highways & Transportation Area 7 Selby Office Canal Road Selby North Yorkshire YO8 OAG	Area7.selby@northyorks.gov.uk

The information given on this form will be shared with partner agencies